

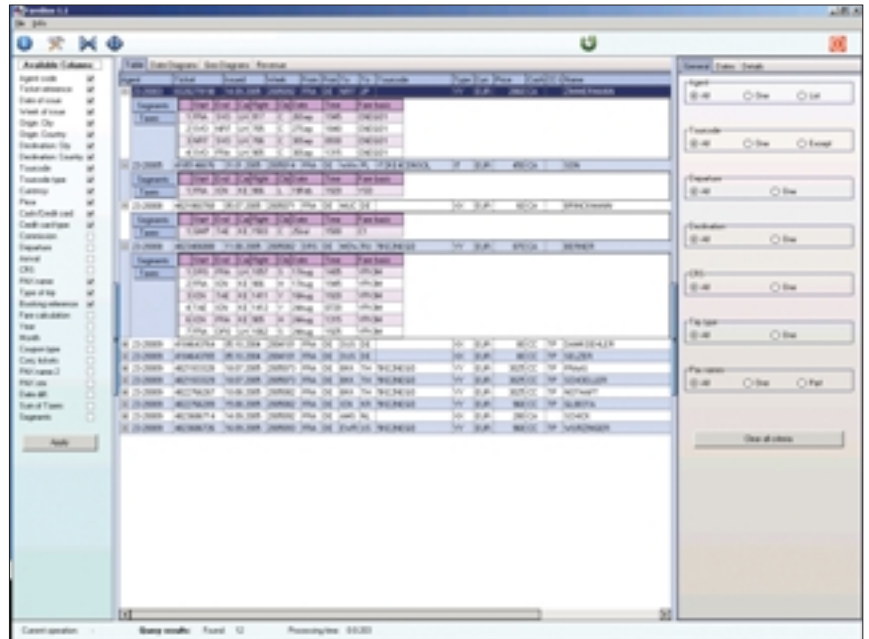
YPSILON FAREBOX



Farebox is a web-based data analysing solution that provides airlines with accurate data analysis of issued tickets. Immediate and precise information for all issued tickets is a vital element for airlines to compete for market share.

The Farebox database is not fed by data provided by tapes but is directly queried via a BSP link, hence making the available data instantaneous and therefore more valuable.

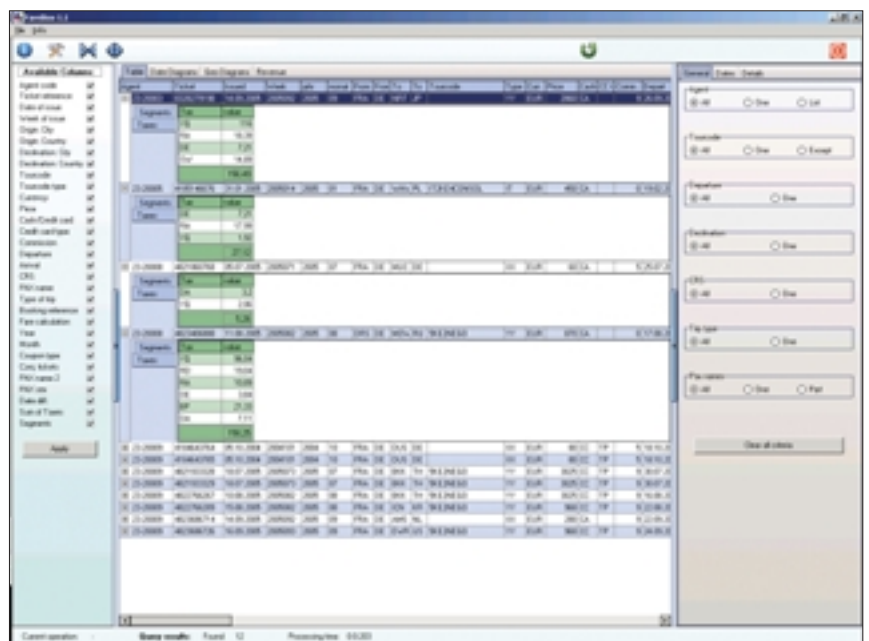
The faster the data can be analysed by the airline the faster the airline can react to market necessities.



All information delivered on issued tickets is stored in the database and can be used for sales and marketing evaluation, statistics and reporting, enabling the airlines to pro-actively act upon market fluctuations and behaviours.

Farebox for example, provides such information as the highest and lowest city pair sold, tickets issued by GDS, class mix, combinations, segments flown by partner airlines, FOP used, credit card type used and quotation information that can be crucial to identify pricing errors and issue ADM (Agency debit memos).

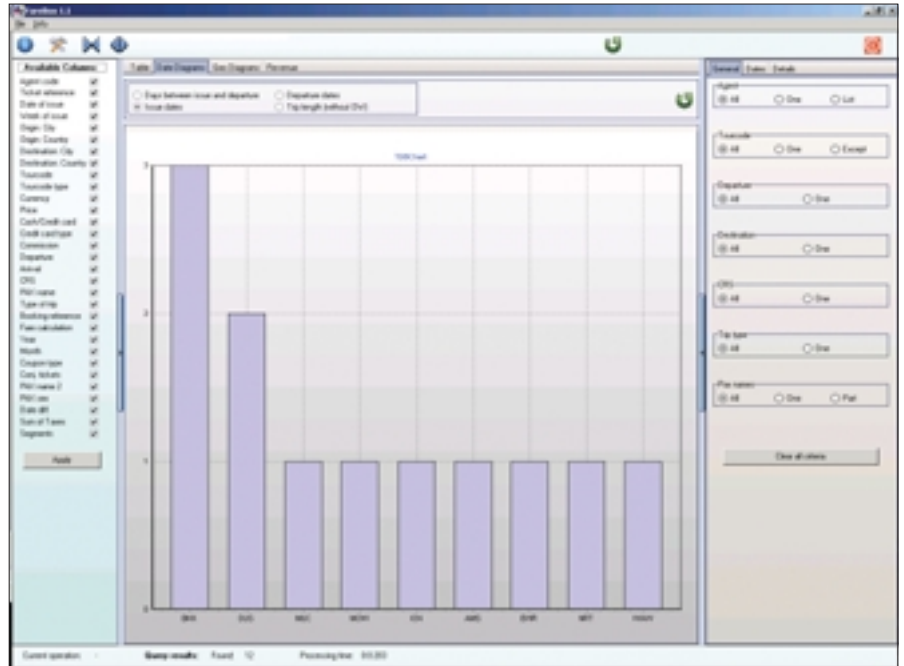
Furthermore, Farebox allows sales volume, fare basis, and class comparison of different agencies.



Time ranges can be defined:

- specific dates (for specials for example).
- periods.
- weeks.
- months.
- years.

- Data can be analysed per market to show sales progression and calculate forecast.
- The fare calculation line is read and analysed to generate complete information about stopovers, transfers and open jaws.
- Class mix can be analysed.
- Partner airlines are shown and listed.
- Taxes and all segments are displayed.
- Conjunction tickets are checked and included in the data analysis.
- The image of the ticket is displayed for direct overview.
- Data storage also allows later comparisons if more thorough analysis is required.
- The user can individually customize the queries.
- The amount of details perused through Farebox can be easily pre-defined by the users.
- The different columns are adjustable and can be arranged to see only the information required.



Another key element of Farebox is the possibility to run specific queries to verify if agencies are issuing the tickets correctly or if surcharges are added correctly.

This functionality enables airlines to monitor how agencies issue tickets and control if all the required information that is supposed to be shown on ticket is accurate.

All queried results can be displayed on a list or a graphical overview.